

**Existing Nozzles**

- MW 18" 150# Pipe/RFWN Flange
- E1 4" 150# Pipe/RFWN Flange **Pressure Relief (1 of 2)**
- E2 4" 150# Pipe/RFWN Flange **Pressure Relief (2 of 2)**
- E3 2" 150# Pipe/RFWN Flange
- E4 2" 150# Pipe/RFWN Flange
- E5 3/4" NPT 3,000# coupling **Thermowell**
- E6 3/4" NPT 3,000# coupling
- E7 3/4" NPT 3,000# coupling **Thermowell**
- E8 3/4" NPT 3,000# coupling **Thermowell**
- E9 3/4" NPT 3,000# coupling **Thermowell**
- E10 3/4" NPT 3,000# coupling **Thermowell**
- E11 3/4" NPT 3,000# coupling **Thermowell**
- E12 8" 150# Pipe/RFWN Flange
- E13 2" 150# Pipe/RFWN Flange
- E14 2" 150# Pipe/RFWN Flange

**Field measurement of saddle C has not been double checked**

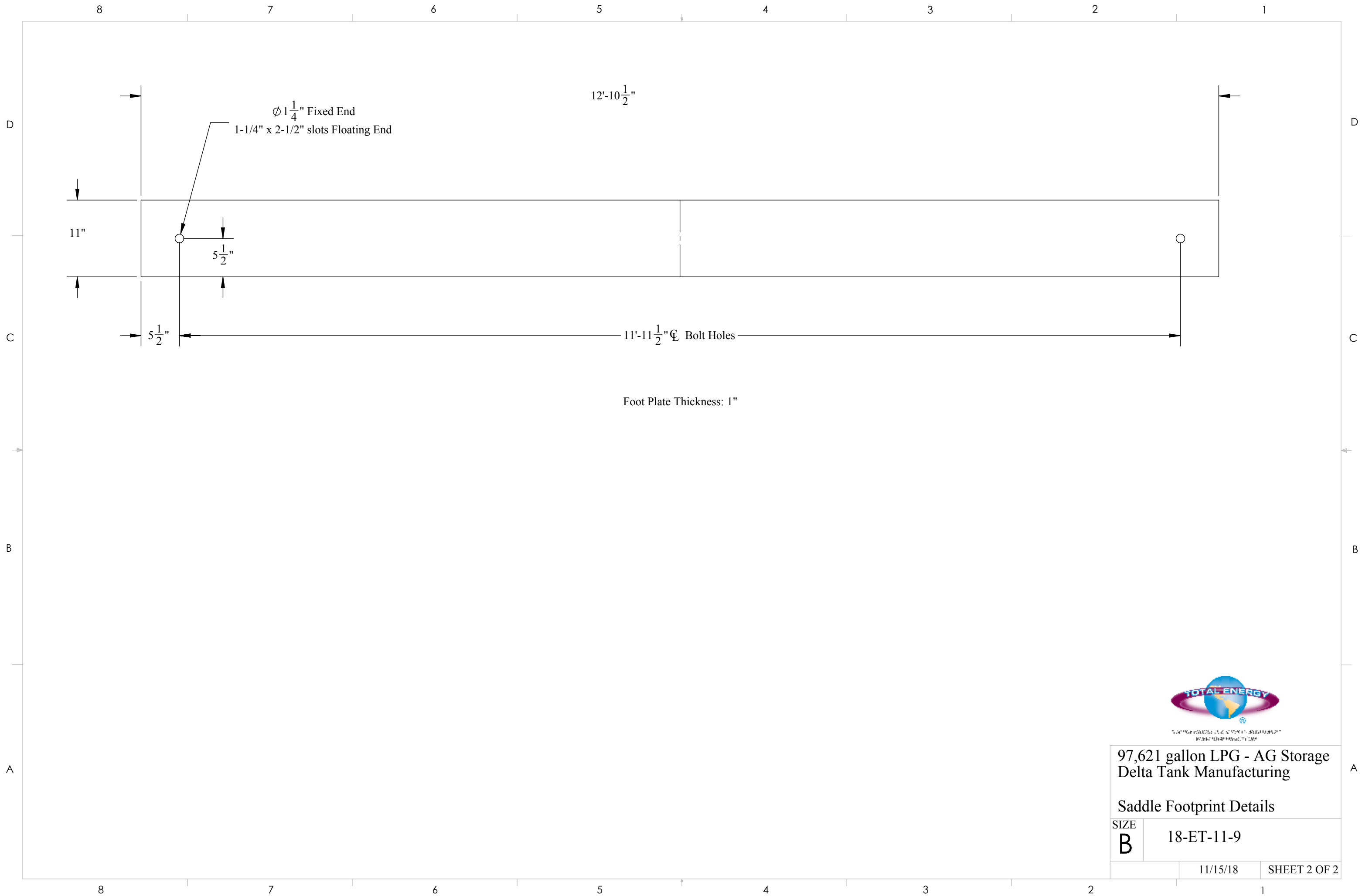
Delta Tank Mfg. Co., Inc.  
 Typical of (4) vessels, SN40716-61-1 through -4

Shell Steel Type: Unknown - Positive Material Identification required  
 Head Steel Type: Unknown - Positive Material Identification required  
 Shell Radiography: Complete, 100% joint efficiency  
 Shell Thickness: 0.5" 154.5" ID  
 Head Thickness: 0.3125" 65.4715" radius (hemispherical)  
 PWHT: None  
 MAWP: 100 psi @ 650F  
 Capacity: 107,959 gallons nominal  
 Est. empty weight: 100,000 pounds



97,621 gallon LPG Storage  
 Delta Tank Manufacturing

SIZE	18-ET-11-9
<b>B</b>	
	11/15/18 SHEET 1 OF 2



97,621 gallon LPG - AG Storage  
 Delta Tank Manufacturing

Saddle Footprint Details

SIZE	18-ET-11-9	
	11/15/18	SHEET 2 OF 2